

AFFORDABLE Desktop LCD 3D Printers



MD-6H



MD-4H



MD-16



M200



M120



M200

Max printing size:
192*120*230mm



M120

Max printing size:
120*70*120mm



Product Samples



| | |
|------------------|---------------------------------|
| Technology | LCD screen light curing molding |
| Printing Size | 192*120*230mm |
| Layer Thickness | 0.01mm-0.1mm |
| X, Y resolution | 75 microns (2560*1600) |
| Print Speed | 2-8s/layer |
| File Types | STL, SLC |
| Operating System | Windows 7 or above |
| Connectivity | USB / Wifi |
| Machine Size | 330*360*530mm |
| Net Weight | 21.3 KG |

| | |
|------------------|--|
| Technology | LCD screen light curing molding |
| Printing size | 120*70*120mm |
| Layer Thickness | 0.02mm-0.05mm |
| X, Y resolution | 47µm (2560*1440) |
| Print speed | 20mm/hour |
| Light source | configuration UV integrated lamp beads |
| Operating System | Windows 7 or above |
| Connectivity | USB / Wifi |
| Machine size | 220*240*360mm |
| Net Weight | 6.4kg |

MINGDA "H and M" Series 3D Printers
Sole Official Distributor in Hong Kong Market



DTSL - Discovery Technologies Limited
Unit 20, 9/F, No.1 Hung To Road, Kwun Tong, Kowloon, HK

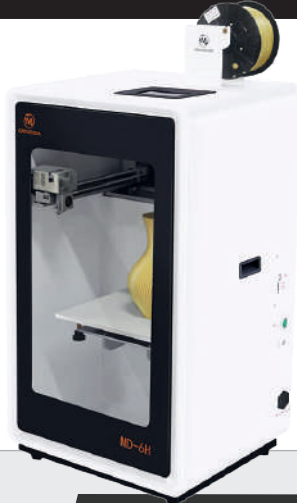
Tel: +852 3160 8443 Email: info@dtsl.asia
Fax: +852 3520 2341 Website: www.dtsl.asia

MEGA Build Size 3D Printers

Cost-effective Student 3D Printer

MD-6H

Max printing size:
400*300*500mm



MD-4H

Max printing size:
300*200*200mm



Highly Reliable

Filament sensor
Print Resume on Power Interrupt
Auto power-off



MD-16

Max printing size:
160*160*160mm



Super quiet printing -
printing noise lower than 40dB

| | |
|----------------------|---|
| Technology | Fused Deposition Modeling |
| Printing Size | 400*300*500mm |
| Display & Controller | 5.0 inch LCD touch screen |
| Heating bed | Alumina heating bed |
| Nozzle | standard 0.4mm MINGDA patent nozzle |
| Layer Thickness | 0.05-0.3mm |
| Max Printing speed | 0-200mm/s (adjustable) |
| Nozzle Temperature | 275 degree |
| Platform Temperature | 110 degree |
| Connectivity | USB / SD Card |
| Printing Materials | PLA, ABS, ASA, HIPS, Nylon, Flexible/TPU, Wood, Carbon Fiber, Copper, Aluminum etc. |
| File Types | STL, STP, OBJ, G-Code |
| Supports | Windows, Linux, Mac OX |
| Machine Size | 550*650*1000mm |
| Net Weight | 64 KG |

| | |
|----------------------|---|
| Technology | Fused Deposition Modeling |
| Printing Size | 300*200*200mm |
| Display & Controller | 5.0 inch LCD touch screen |
| Heating bed | Alumina heating bed |
| Nozzle | standard 0.4mm MINGDA patent nozzle |
| Layer Thickness | 0.05-0.3mm |
| Max Printing speed | 0-200mm/s (adjustable) |
| Nozzle Temperature | 275 degree |
| Platform Temperature | 110 degree |
| Connectivity | USB / SD Card |
| Printing Materials | PLA, ABS, ASA, HIPS, Flexible/TPU, Wood, Nylon, Copper, Carbon Fiber, Aluminum etc. |
| File Types | STL, STP, OBJ, G-Code |
| Supports | Windows, Linux, Mac OX |
| Machine Size | 520*410*665mm |
| Net Weight | 41 KG |

| | |
|----------------------|---|
| Technology | Fused Deposition Modeling |
| Printing Size | 160*160*160mm |
| Display & Controller | 3.5 inch LCD touch screen |
| Heating bed | Alumina heating bed |
| Nozzle | standard 0.4mm MINGDA patent nozzle |
| Layer Thickness | 0.05-0.3mm |
| Max Printing speed | 0-200mm/s (adjustable) |
| Nozzle Temperature | 275 degree |
| Platform Temperature | 110 degree |
| Connectivity | USB / SD Card |
| Printing Materials | PLA, ABS, ASA, HIPS, Flexible/TPU, Wood, Nylon, Copper, Carbon Fiber, Aluminum etc. |
| File Types | STL, STP, OBJ, G-Code |
| Supports | Windows, Linux, Mac OX |
| Machine Size | 300*350*395mm |
| Net Weight | 13kg |